

Test Case-41

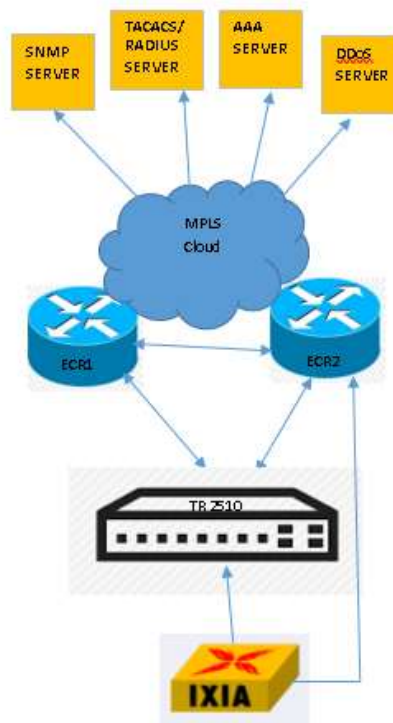
Test Name: RJIL-IP-QA-DS-SYS-042

Test Objective: To check support of configuration management through the Command Line Interface (CLI) as well as GUI based software configuration utility.

Test Configuration:

ip http server

Test Set up (Including Pre requisites): Switch ,ECR1,ECR2



Procedure: Connect switch to the ECR1,ECR2

Action:		Response:	
1	Open switch through CMD and browser	1	We should be able to open and configure the switch by cmd and with browser.

Expected Result: We should be able to open the graphical view using internet explorer or chrome

Actual Result:

TR S2510POE-DC

Not secure | 10.64.89.228/index.asp

Techroutes

Save All | Logout | Port Panel | About

Device Info

Device Status

- Device Info
- Interface State
- Interface Flow
- Mac Address Table
- Log Query
- Optic Module Info

Basic Config

Port Config

L2 Config

L3 Config

Advanced Config

Network Mgr.

Diagnostic Tool

System Mgr.

System Information

Device Type	TR S2510POE-DC
BIOS Version	0.3.8
Firmware Version	2.2.0C Build 71585
Serial No.	20022013019
MAC Address	5CCC.FF13.20E9
IP Address	10.64.89.228
Current Time	2020-3-27 13:57:49
Uptime	7 Day -20 Hour -44 Minute -1 Second
CPU Usage	23%
Memory Usage	76%

Refresh

System's available memory is ve...
Click here to see the details...

1:57 PM
3/27/2020

TR S2510POE-DC

Not secure | 10.64.89.228/index.asp

Techroutes

Save All | Logout | Port Panel | About

Hostname

Device Status

Basic Config

- Hostname
- Clock Mgr.
- IP Config

Port Config

L2 Config

L3 Config

Advanced Config

Network Mgr.

Diagnostic Tool

System Mgr.

Hostname Configuration

Configure the hostname.

Hostname* GUTCHECK

Apply Reset

Help

#Configure the hostname of the switch.



Interface State

Device Status

- Device Info
- Interface State**
- Interface Flow
- Mac Address Table
- Log Query
- Optic Module Info

- Basic Config
- Port Config
- L2 Config
- L3 Config
- Advanced Config
- Network Mgr.
- Dagnostic Tool
- System Mgr.

Interface State Information									
Refresh									
No.1	Page/Total	1 Page	First	Prev	Next	Last	Go No.	Page Search:	Current 10 Item/Total 10 Item
Interface	Port Description	Enable	Connection state		MAC Address	Speed	Duplex	Flow control	
g0/1		Enable	Connect		5CCC.FF13.20EA	1000Mb/s	Full	Off	
g0/2		Enable	Connect		5CCC.FF13.20EB	1000Mb/s	Full	Off	
g0/3		Enable	Connect		5CCC.FF13.20EC	1000Mb/s	Full	Off	
g0/4		Enable	Connect		5CCC.FF13.20ED	1000Mb/s	Full	Off	
g0/5		Enable	Down		5CCC.FF13.20EE	---	---	Off	
g0/6		Enable	Down		5CCC.FF13.20EF	---	---	Off	
g0/7		Enable	Down		5CCC.FF13.20F0	---	---	Off	
g0/8		Enable	Down		5CCC.FF13.20F1	---	---	Off	
g0/9		Enable	Down		5CCC.FF13.20F2	---	---	Off	
g0/10		Enable	Connect		5CCC.FF13.20F3	1000Mb/s	Full	Off	